

abbotFox

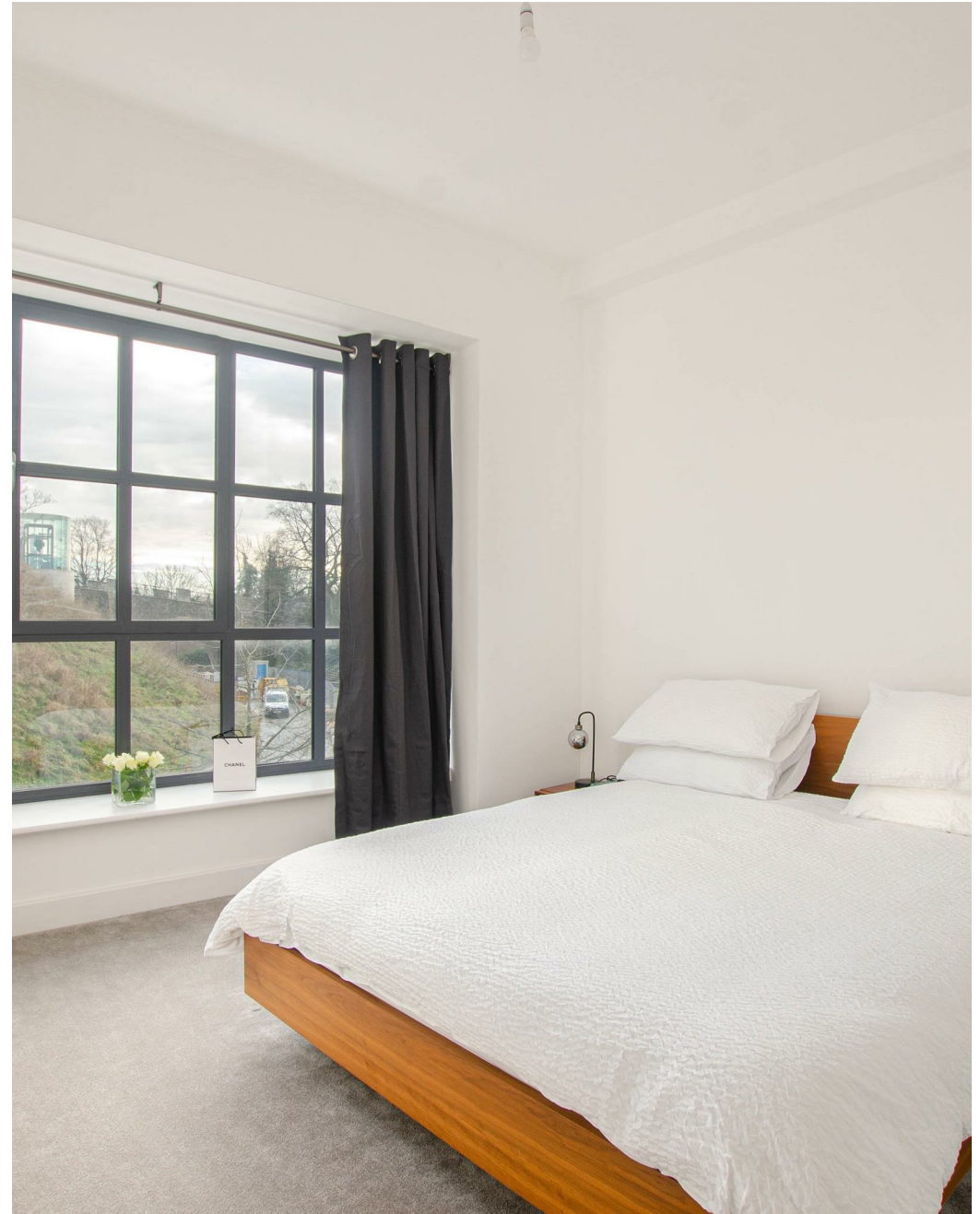


Castle Meadow, Norwich  
*£1,400 PCM*

“

We are a team of genuine individuals who hold a deep passion for both property and marketing. Collectively, we bring over 70 years of experience in the property market of Norfolk and Suffolk. Our affection for both counties runs deep, and we are enthusiastic about sharing our passion with you.

Colin McKenzie | **Branch Partner**







## THE DETAIL \_\_\_\_\_

abbotFox presents a truly amazing and unique one bedroom, second floor apartment.

Ideal for those who want luxury living and to be able to live in the city centre, this one-bedroom apartment, looks out directly onto one of the city's most prized landmark gems, Norwich Castle. Situated on the second floor, so high above street and road level, the apartment is insulated from the hustle and bustle of the city. This partly furnished home has one of the best views in Norwich. It's an ideal, low maintenance home situated in the heart of Norwich City Centre meaning shops and restaurants are literally on your doorstep. Castle House is a high-end conversion of an existing office building which now boasts 23 apartments. A palatial lobby with a lift and disabled access leads to your apartment with your own front door. Inside the apartment, with high ceilings, it has a spacious feel and a carpeted hallway leads to a modern bathroom and in-built wardrobe storage for clothing. At the other end of the hallway is a large open plan kitchen/diner/living room with wide picture windows overlooking the castle. It's quiet thanks to the insulated remodelled windows which can be fully opened. The kitchen is fully equipped with integrated appliances including a fridge/freezer, dishwasher, oven, hob and extractor. A washer/dryer can be provided if required. There is currently a new Loaf dark blue velvet corner sofa, lighting and a table with four chairs. Off the other side of the hall is a carpeted bedroom with a king-size bed, as well as a new dressing table, chair and two bed-side units with storage.

There is no parking but a large area for bike storage.

A short-term let can be negotiated.





## THE HIGHLIGHTS \_\_\_\_\_

- Available June
- Part furnished
- Views of Norwich City Castle
- City centre location
- Bike store available
- Intercom system
- Integrated appliances

*Let's talk*

01603 660000

[sales@abbotfox.co.uk](mailto:sales@abbotfox.co.uk)

[@abbotfox](#)

EPC RATING -

Disclaimer – In accordance with the Property Misdescriptions Act, the company abbotFox gives notice that all descriptions, references to condition, necessary permissions for use and other details are given in good faith and believed to be correct, but any purchaser should not rely on them as statements of fact, and must satisfy themselves by inspection or other means, as to their accuracy.